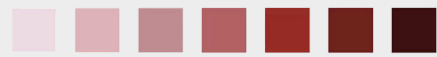


Northeast
RISCC
Management

Regional Invasive Species
& Climate Change



2021 YEAR IN REVIEW

As we continue to better understand and communicate the challenges of climate change and invasive species, we'd like to share a summary of this year's accomplishments



610

(144 NEW)

RISCC LISTSERV MEMBERS

3



ORIGINAL RESEARCH ARTICLES PUBLISHED

- ▶ **Translational Invasion Ecology: Bridging research and practice to address one of the greatest threats to biodiversity.** Morelli et al. 2021. *Biol. Invasions*, 23: 3323-3335. doi.org/10.1007/s10530-021-02584-7
- ▶ **Invasive plant regulations in the U.S. are reactive and inconsistent.** Beaury et al. 2021. *Journal of Applied Ecol.* 58: 1957-1966. doi.org/10.1111/1365-2664.13934
- ▶ **Identifying high-impact invasive plants likely to shift into Northern New England with climate change.** Coville et al. 2021. *Invasive Plant Sci. & Mgmt.*, 14(2): 57-63. doi.org/10.1017/inp.2021.10



received from the
Association of Fish & Wildlife Agencies

2 NEW MANAGEMENT CHALLENGES PUBLISHED

Forest Pest Risk is Heating Up



Embracing the Future...



Each downloaded > 400 times!

34

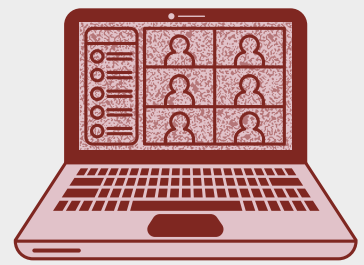
RISCC PRESENTATIONS DELIVERED



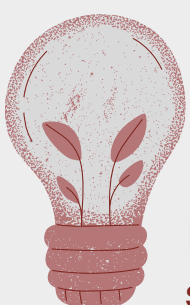
Hosted 2 Invasive Plant Council Workshops

120

ZOOM ATTENDEES



at the 2021 RISCC Symposium (virtual) and 163 registered so far for 2022



18

NEW RESEARCH SUMMARIES

Educate yourself on relevant research and management strategies from our 73 research summaries available at:

www.risccnetwork.org/research-summaries

2

NEW TOOL SUMMARIES

Explore useful online management and research tools at:

<https://www.risccnetwork.org/tool-summaries>

3

RISCC NETWORKS ESTABLISHED



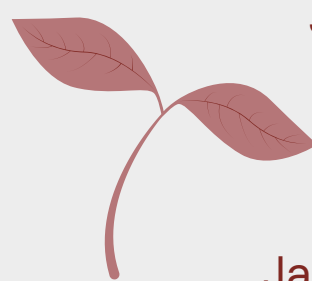
Northwest RISCC

North Central RISCC

Pacific Islands RISCC

Plus Southeast in progress!

SEE YOU IN 2022!



Join us for the
2022 RISCC Symposium (virtual) on
January 19-20th

Register at:

risccnetwork.org/symposia